



RESIDENTIAL ALUMINIUM BI-FOLD AND SLIDING DOORS

ALUK[®]
INSPIRING YOUR HOME



A new way to enjoy your garden & home

Enjoy your garden all year round with Aluk bi-fold and sliding doors. Make the most of your outside space with panoramic views through unencumbered glazing during the winter and wide open expanses, straight out into your garden, in summer and spring.

Manufactured from strong but lightweight aluminium our sliding and folding doors are available in many configurations to suit your home. Whether your property is large or small, you can still achieve the open plan living you desire without worrying about the weather outside.

Designed to the highest standards, our doors are reliable, secure and built with performance in mind, ensuring that you enjoy this relaxing and stylish way of living for many years to come.

*"Expand your living space
by bringing the outside in"*

Performance Icon Key



Acoustics



Air



Wind



Water



U-Value



SBD

Please note that the performance indicators represent the optimal measurement rate. This may vary depending on the specifications of the doors



Bi-fold doors

Enhance your living space all year round

Create modern and enjoyable living spaces by opening up your home to your garden with our stunning range of bi-fold doors; designed to enhance your home, built to perform.



Premium Sliding Doors

See more of your garden throughout the year

Keeping the weather at bay, our high performance lift and slide doors put a whole new perspective on your outside space, opening up wide areas of your living space to your garden.



Patio Doors

Bring the light into your home

Why settle for a darkened room and obstructed views when you can choose a high performance, stylish and durable patio door to open up your home and let the light flood in.





Stunning living spaces

Imagine the difference bi-fold doors could make to your home and the way you use your outside space

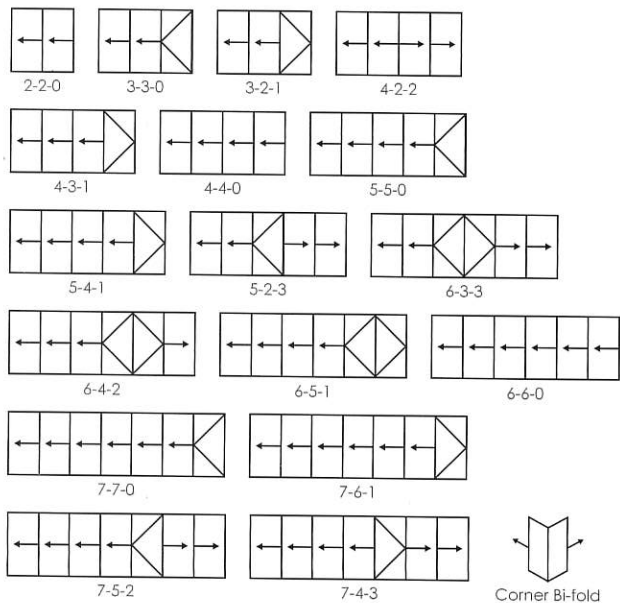
Bi-fold Doors

Bi-fold doors are the ideal way to open up your home and bring the outside in, whilst still keeping the elements out.

AluK is a leader in the design and manufacture of aluminium sliding and folding doors, delivering outstanding reliability, performance and design every time. Our range of bi-fold doors enables you to expand your living space by opening up wide expanses of your external walls to your outside space, whilst at the same time keeping the weather out and the heat in during cold months.

Our stylish but practical bi-fold doors are built to your needs, offering you a bespoke solution every time, from the configuration of the doors to the handles, accessories and colour, making AluK bi-fold doors the perfect addition to your home.

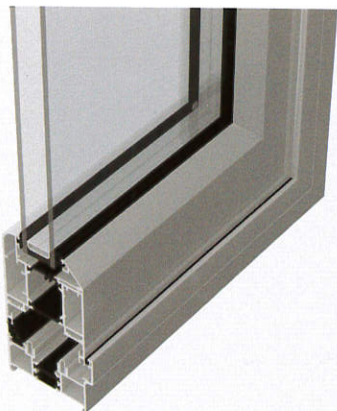
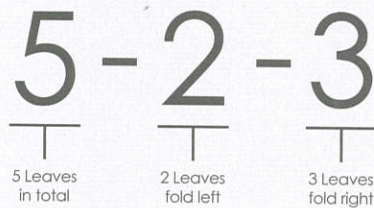




Configurations

The diagrams shown here illustrate some of the configurations achievable with AluK's bi-fold door system. Panels can be stacked inside or outside to meet your configuration and space needs.

How configurations work



*"Get the design and performance
you want with the style you deserve"*

Built for your home

Complete flexibility to suit your needs

Our bi-fold doors have been designed to provide you with the flexibility to create the perfect look that will complement your home and your lifestyle.

- Wide range of configuration options
- High performance glazing and design
- Minimal profiles for a modern look
- Complete range of handles and accessories
- Unique flush line pop-out handle option
- Full range of standard and bespoke colours
- Dual colour option for inside and out
- Chamfered and square bead options
- Tested to PAS24 for enhanced security and SBD
- Sturdy and reliable sliding mechanism
- Low threshold option for room dividers
- High performance as standard
- Can easily be combined with all AluK window and door systems
- Also available in a corner configuration



Class 4



AE2400



600Pa



U-Value

1.7



PAS24



Premium Sliding Doors

Let the light into your home with high performance aluminium sliding doors

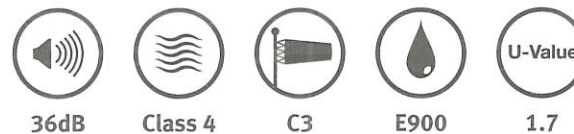
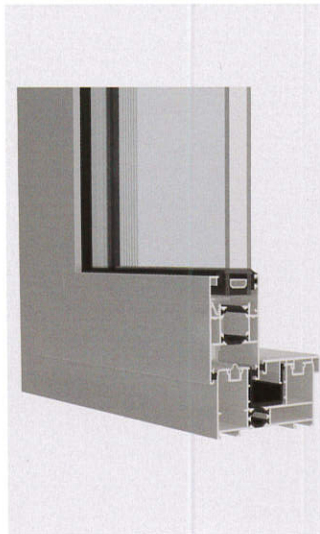
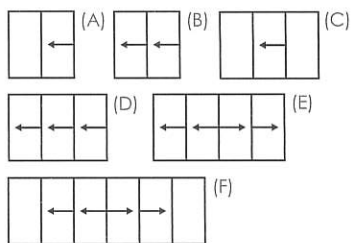
The AluK range of inline or lift and slide premium aluminium doors offers high performance complemented by stunning design, adding a modern and stylish look to your home, opening your living space to the outside.

Combining unique system design with a range of configurations, they will enhance your home whilst keeping the weather at bay.

- Narrow profile with single, double or triple track options
- Single or dual colour options in wide range of colours
- Complete range of handles, accessories and security features
- 3m high x over 3m wide panels
- Smooth operation through stainless steel rollers
- Lift and slide for large opening elements
- Floor to ceiling height sliding panels
- Can easily be combined with all AluK window and door systems

Configurations

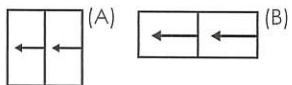
- (A) One Panel Sliding
- (B) Two Panel Sliding
- (C) Three Panel, Single Sliding
- (D) Three Panel Sliding
- (E) Four Panel Sliding
- (F) Six Panel, Four Sliding





Configurations

- (A) Two pane sliding door
(B) Two pane sliding window



Patio Doors

Minimal frame design to maximise glazing

Our range of patio doors offers an ideal and inexpensive solution for your home, with minimal frame design to let the maximum amount of light flood in.

Built to the highest standards, our patio door range combines flexibility with design and security to ensure your comfort and peace of mind.

- Narrowest frame design - only 70mm - ideal for replacement of old doors
- Two pane sliding door or window
- Full range of complementary handles and security features
- Robust and reliable sliding and locking mechanism
- Single or dual colour options in a wide range of colours
- Multi-point locking
- Can easily be combined with all AluK window and door systems

*"Let the light flood into your home
whilst keeping the weather out"*



Class 2



C3



250Pa



1.7

The Aluk range of doors is designed and manufactured to meet the specific needs of UK homeowners. Delivering high quality construction, demanded by stringent UK standards and regulations, as well as the performance required to protect your home from the elements, our stylish and robust doors can be relied upon to always deliver.

Performance built-in

All our high performance door systems exceed current standards and regulations ensuring that our customers receive the best product every time. Through the design of unique technologies we ensure the highest thermal, acoustic and security performance.

Safe and secure

Combining high quality security features and hardware with the inherent properties of aluminium has allowed most of our doors to be tested to PAS 24 for enhanced security, and most are certified under the 'Secured by Design' scheme where applicable. This ensures that our products provide the highest levels of security to our customers.



Design flexibility

With a wide range of profiles, frame depths, optional elements, finishes and hardware to choose from, you will always find an Aluk door to reflect your style and taste.

A splash of colour

Aluk doors are available in a multitude of colours, from our standard range to the full RAL spectrum. Our profiles are polyester powder coated with the highest quality powders, providing you with the peace of mind of a 25 year guarantee. The choice is yours; pick from one of our standard finishes or choose a bespoke finish from more than 500 colours as well as a different colour inside and out.



Network of approved fabricators and installers

AluK systems are fabricated and installed by an approved network of specialist glazing companies who have been trained by us to the highest standards. We pride ourselves on the high level of service our approved installer network can deliver, giving you a reliable and trustworthy service every time.

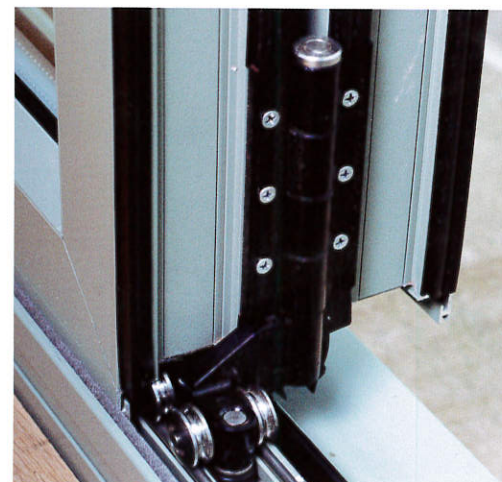
Peace of mind

We are proud of the quality and finish of our doors, and to support this, we provide a 10 year system guarantee on our frames and hardware and a 25 year guarantee on coatings, subject to terms & conditions. Please contact us for full guarantee terms and conditions.

At AluK customer service is paramount

We have a full customer service and technical team available to help you with your questions.

Whether you need technical advice on product choice and finish or just need to know more about the benefits of aluminium doors, our experienced and knowledgeable team is on hand to help with your enquiry.



T: 01633 81 04 40
F: 01633 81 60 04
info@alukhome.co.uk
sales@alukhome.co.uk



PAS 24



BS 4873



 www.alukhome.co.uk

Registered Office: Aluk (GB) Limited Imperial Park Celtic Way Newport NP10 8BE
Registered Number: 02881320